

# Miami bottling plant reuses most of its water after adding RO system

By PETER J. HOVANEC

Adding an additional reverse osmosis system at the outflow source and re-routing the discharged water back through the system sounds so simple, it's amazing that it isn't done more often. The process not only reduces the amount of discharge greatly, but also cuts the water usage drastically.

The Water Management Group, based in South Florida, has done just that at Shasta Corp.'s Miami Bottling facility; and, although the system may not be suitable for all industries, initial feedback couldn't be better from Shasta.

"Our client had problems exceeding its permissible discharge limits, resulting in thousands of dollars in fees to the Miami-Dade Sewer Authority," said Jeff Dunn, Water Management Group vice president. "We set up another reverse osmosis system to reprocess the discharged water and run it back to the beginning of the water inflow system."

Dunn said in addition to cutting discharge and water usage, the process also increased the quality of usable water. The system is designed to recover approximately 75% of previously treated water used in the soft drink and water bottling process.

"We are very pleased to have the opportunity to demonstrate that many beverage bottling companies with similar circum-

stances, may not need to discharge huge amounts of 'good' quality water to city sewers and pay thousands of dollars in fees," Dunn said in a written statement. "The water quality from the reuse system is so good that the recovered water can be reused for process water or plant utilities."

Bill Berry, director of operations at Beverage Corporation International, the Miami division of Shasta Corp., said the system has been online for roughly a month and initial estimates show the system will save the plant 2 to 2.5 million gallons of water per month.

"The (savings) alone from the reduction in water usage will pay for installation of the system well within a year," Berry said. "We are very happy with the way the system is operating and how it appears to be reducing our outbound flow."

Berry said the amount of discharge looks like it has been cut in half, but exact figures would not be known until delayed bills from the Miami-Dade Sewer Authority are received.

Berry said the corporation operates 16 facilities throughout the United States and he has alerted other plants of the process and its potential benefits. "Although the other plants were notified, we want to quantify the results and be sure of what we have before we make any other proposals for the other plants."

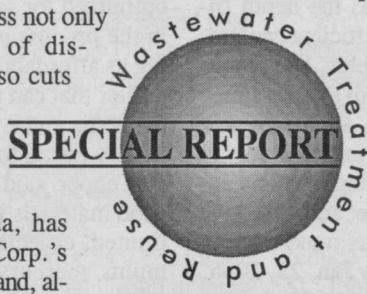
Dunn said in evaluating the bottling company's needs—reducing water usage

and reducing the discharge—this type of implementation was the obvious choice.

"As far as space and cost limitations, this new system provides the best relief for the company," he said. "It seemed obvious to reroute the discharge through a process that was both confined and relatively in-

expensive to get immediate cost-saving results."

Dunn added that with most of Florida looking for ways to better conserve groundwater, the reuse system is just another option for industries with that type of need to explore.



Industries in Florida are looking to conserve groundwater—this reuse system does just that.

## COLLINSWORTH, ALTER, FOWLER, DOWLING & FRENCH, GROUP, INC.

MAKING INSURANCE

LESS COMPLICATED

PROFESSIONAL & NON PROFESSIONAL LIABILITY PROGRAMS DESIGNED

TO BE COMPETITIVE FOR YOUR NEEDS. . .

OTHER AVAILABLE COVERAGES

- POLLUTION PROFESSIONAL LIABILITY • PROJECT INSURANCE
- JOINT VENTURE/EQUITY INTEREST COVERAGE
- INCREASED LIMITS FOR SPECIFIC PROJECTS
- CGL/CAL/WC/UMBRELLA PROGRAMS

THE ONLY A/E  
PRONET MEMBER  
IN FLORIDA

5979 N.W. 151ST STREET (P.O. BOX 9315), SUITE 105, MIAMI LAKES, FL 33014  
PHONE: (305) 822-7800 • BROWARD: (305) 463-8601 • FAX: (305) 362-2443

## Attention

### Engineers, Geologists, and Project Managers

- Do you need to install a remedial system?
- Do you need to excavate contaminated soils?
- Are you having trouble getting three quotes?

If the answer to any of these questions is **yes**, you need to call

## Custom Tank & Industrial

(561) 998-1699

Remedial System Installation • UST Installation & Removal  
Excavation of Contaminated Soils

UNIQUE SOLUTIONS  
TO YOUR DIFFICULT  
SEWERING PROBLEMS